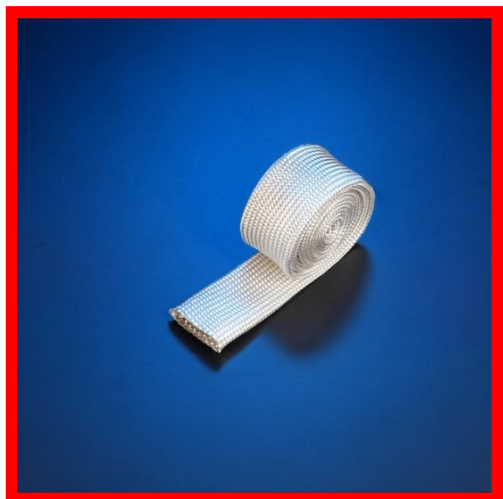


## Very High Temperature Fiberglass Braided Saturated Sleeve Expandable - Premium Grade



This Braided fiberglass sleeve is fabricated from high quality type E fiberglass that will not burn and will withstand continuous exposure to temperatures of 1000°F / 537°C.

This material resists most acids and alkalis and is unaffected by most bleaches and solvents. It is highly flexible and conformable.

The base fiber is manufactured to the specifications of ASTM D-578, ASTM committee D13, and subcommittee D13.18.

1000°F / 537°C continuous rating, high insulation value & excellent personnel protection

Very High Temperature Fiberglass Braided Saturated Sleeve - Expandable - Premium			
Part Number	Size Range	Price per Spool	Feet per Spool
AB-BFSS-M006/010-04/06	1/4" to 3/8"	\$ 690.00	600
AB-BFSS-M010/013-06/08	3/8" to 1/2"	\$ 748.00	400
AB-BFSS-M013/019-08/12	1/2" to 3/4"	\$ 891.00	300
AB-BFSS-M016/025-10/16	5/8" to 1"	\$ 995.00	250
AB-BFSS-M019/032-12/20	3/4" to 1 1/4"	\$ 1,332.50	250
AB-BFSS-M025/044-16/28	1" to 1 3/4"	\$ 1,584.00	200
AB-BFSS-M038/057-24/36	1 1/2" to 2 1/4"	\$ 1,828.50	150
AB-BFSS-M064/102-40/64	2 1/2" to 4"	\$ 1,464.75	75

Please call for additional discount pricing when ordering more than 5 spools.

The addition of an acrylic saturant adds rigidity and abrasive resistance to the sleeve, reducing the likelihood of end fray and results in a sleeve that is easy to apply over long lengths of hose or cable.

The large braid angle allows for significant expansion of the sleeve resulting in ease of installation, for example, in situations where a hose may have an in-line coupling or adapter to a larger size hose; or similarly where cables may have a splice.

**This Product is NOT Available By-The-Foot – Full Spool Only**