

TadpoleTape™

| | |
|--|-------|
| 500°F / 260°C Silicone Rubber TadpoleTape™ | 2-101 |
| 500°F / 260°C Silicone Rubber Coated Stainless Mesh TadpoleTape™ | 2-101 |
| 320°F / 160°C Aramid High Strength TadpoleTape™ | 2-102 |
| 1200°F / 648°C Precision Fiberglass TadpoleTape™ | 2-103 |
| 1200°F / 648°C Fiberglass Heavy Duty TadpoleTape™: with Rope or Wire Mesh Core | 2-104 |
| 1350°F / 732°C ProSil™ Silica/Glass Blended Fabric Heavy Duty TadpoleTape™: with Rope or Wire Mesh Core | 2-105 |
| 1350°F / 732°C ProSilMax™ Silica/Glass Blended Fabric with wire insert Heavy Duty TadpoleTape™: with Rope or Wire Mesh Core | 2-106 |
| 1500°F / 815°C Fiberglass with Vermiculite Coating Heavy Duty TadpoleTape™: with Rope or Wire Mesh Core | 2-107 |
| 1800°F / 982°C InSilMax™ Heavy Duty TadpoleTape™: with Rope or Wire Mesh Core | 2-108 |
| 1900°F / 1037°C InSilMax™ XT Heavy Duty TadpoleTape™: with Rope or Wire Mesh Core | 2-108 |
| 2000°F / 1093°C CerMax™ Heavy Duty TadpoleTape™: with Rope or Wire Mesh Core | 2-110 |

Tadpoles with Specialized Coatings

| | |
|---|-------|
| 550°F / 287°C Fiberglass with PTFE Coating Heavy Duty TadpoleTape™: with Rope or Wire Mesh Core | 2-112 |
| 550°F / 287°C Rubberized Fiberglass Tacky Cloth Heavy Duty TadpoleTape™: with Rope or Wire Mesh Core | 2-113 |
| 550°F / 287°C Expanded PTFE Heavy Duty TadpoleTape™: with Rope or Wire Mesh Core | 2-114 |

CUSTOM SIZED TADPOLE GASKET TAPE

The catalogue pages for tadpole gasket tapes show our line of standard materials and sizes that are made by our fabrication shop.

Our tadpole gasket fabrication shop can manufacture tadpoles of almost size and shape using our standard materials, or from other materials not normally used.

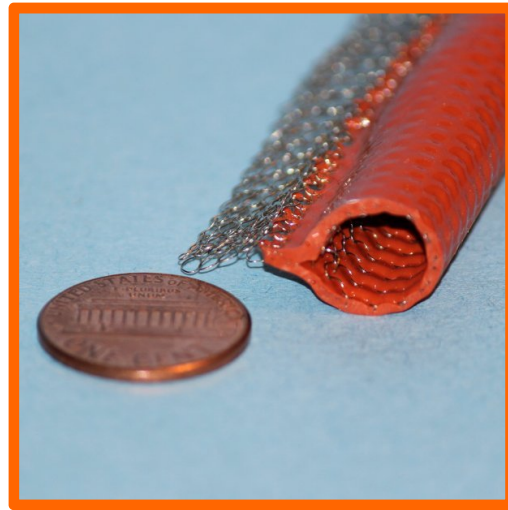
Please feel free to request a quote; either a description, or a drawing, or a photo is useful. If you would like us to match materials to an existing tadpole that needs replacement, then either a detailed close-up photo or a sample would be very useful.

Please send quote requests to info@abthermal.com or call the order desk at 610-906-3549.

High Temperature Silicone Rubber “P” and Tadpole Gasket Seals 500°F / 260°C



Extruded “P” Tadpole Gasket Seal



Stainless Mesh with Silicone Rubber Bulb

Silicone rubber extruded profiles make excellent gaskets and seals. Can be used for applications up to 500°F / 260°C continuous rating with weld splatter / molten metal splash protection. These silicone rubber products provide excellent cold temperature performance with flexibility to -76°C for refrigeration and cryogenic applications.

Excellent sealing against liquids and gases.

TT-SS-SR-0.937-0.437 is a 15/16” overall width tadpole with a 7/16” OD bulb. It is a common tadpole to use in cryogenic freezing access doors, such as food processing freezing and packaging lines.

| High Temperature & Heat Resistant Silicone Rubber Tadpole Gasket Tape | | | |
|--|--------------------------------|------------------------|-----------------------|
| Part Number | Feet / Metres per Spool | Price per spool | Price per foot |
| TT-SR-M051-32-E | 100 / 30.48 | \$ 1491.66 | NA |
| TT-SS-SR-0.937W-0.437B | 100 / 30.48 | \$ 670.00 | \$ 15.41 |

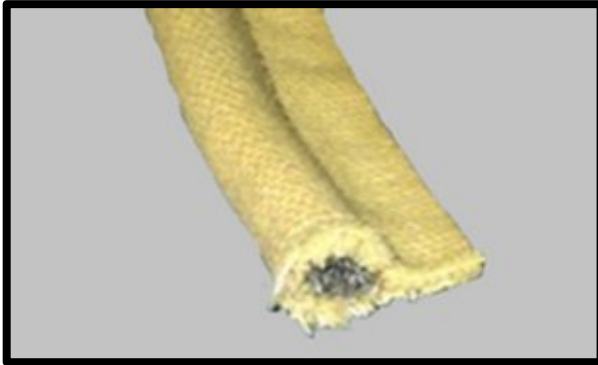
OTHER SIZES AVAILABLE – PLEASE INQUIRE

Custom sized tadpole gasket tapes are available – Please provide dimensions or a drawing



Aramid (Aromatic Polyamide) Tadpole Tape with Aramid Rope or Wire Mesh Bulb Core

320°F / 160°C TadpoleTape™ High Temperature, Heat Resistant & High Strength



Made from our aramid fabrics and ropes, and metallic mesh ropes, this is a soft and resilient gasket material for effective sealing on light metal flanges and where limited bolting force is available – and where doors and other closures rest on the bulb. The aramid fabric is very abrasion and cut resistant, ideal for high cycle applications. Not suitable for applications involving prolonged sunlight or UV exposure.

Available By-The-Foot or in standard rolls of 50 and 100 feet. **This product has a \$250 minimum order value.**

Kevlar® is a popular brand name of an Aramid polyamide material from DuPont. Our Aramid is not a DuPont product.

This product is highly flexible and conformable.

TadpoleTape™ High Temperature & Heat Resistant Aramid with Aramid Rope Core

| Part Number | Over All Width in / mm | Price per Foot By Bulb Size: A / B / C / D / E in / mm | | | | |
|-------------------|------------------------|--|------------------|--------------------|------------------|-----------------|
| | | "A" | "B" | "C" | "D" | "E" |
| | | 3/8" / .375 / 7.9 | 1/2" / .500 / 13 | 5/8" / .625 / 15.8 | 3/4" / .750 / 19 | 1" / 1.000 / 25 |
| TT-A-RC-M025-16-X | 1.00 / 25 | \$ 8.40 | \$ 9.24 | \$ N/A | N/A | N/A |
| TT-A-RC-M032-20-X | 1.25 / 32 | \$ 8.64 | \$ 9.60 | \$ 11.04 | \$ 11.66 | N/A |
| TT-A-RC-M038-24-X | 1.50 / 38 | \$ 9.24 | \$ 9.96 | \$ 11.40 | \$ 12.50 | N/A |
| TT-A-RC-M044-28-X | 1.75 / 44 | \$ 9.60 | \$ 10.32 | \$ 12.00 | \$ 13.08 | \$ 18.64 |
| TT-A-RC-M051-32-X | 2.00 / 51 | \$ 9.72 | \$ 11.04 | \$ 12.84 | \$ 13.44 | \$ 19.32 |
| TT-A-RC-M063-40-X | 2.50 / 63 | \$ 10.92 | \$ 11.88 | \$ 13.92 | \$ 14.40 | \$ 20.40 |
| TT-A-RC-M076-48-X | 3.00 / 76 | \$ 11.88 | \$ 12.72 | \$ 14.34 | \$ 15.48 | \$ 21.12 |

TadpoleTape™ High Temperature & Heat Resistant Aramid with Stainless Steel or Inconel 600 Mesh Core

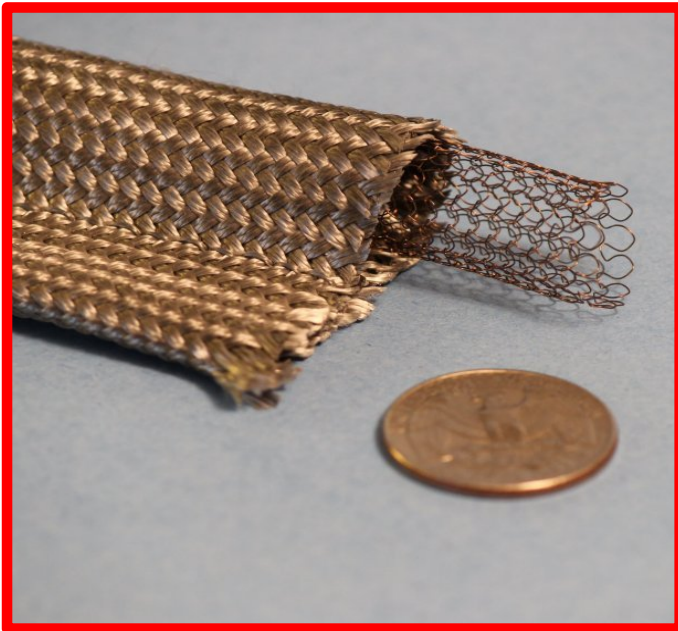
| Part Number | Over All Width in / mm | Price per Foot By Bulb Size: A / B / C / D / E in / mm | | | | |
|---------------------|------------------------|--|-------------------------------|---------------------------------|-------------------------------|------------------------------|
| | | "A" | "B" | "C" | "D" | "E" |
| | | 3/8" / .375 / 7.9 SS / Inconel | 1/2" / .500 / 13 SS / Inconel | 5/8" / .625 / 15.8 SS / Inconel | 3/4" / .750 / 19 SS / Inconel | 1" / 1.000 / 25 SS / Inconel |
| TT-A-MC-M025-16-X-Z | 1.00 / 25 | \$11.68 / \$14.16 | \$12.48 / \$16.40 | N/A | N/A | N/A |
| TT-A-MC-M032-20-X-Z | 1.25 / 32 | \$11.84 / \$14.32 | \$12.64 / \$16.64 | \$16.96 / \$18.08 | \$16.12 / \$19.12 | NA |
| TT-A-MC-M038-24-X-Z | 1.50 / 38 | \$12.08 / \$14.40 | \$12.88 / \$16.96 | \$17.12 / \$18.32 | \$16.56 / \$19.60 | NA |
| TT-A-MC-M044-28-X-Z | 1.75 / 44 | \$12.40 / \$14.96 | \$13.12 / \$17.28 | \$17.52 / \$18.64 | \$17.68 / \$20.40 | \$20.64 / \$22.28 |
| TT-A-MC-M051-32-X-Z | 2.00 / 51 | \$12.56 / \$15.44 | \$13.52 / \$17.76 | \$18.08 / \$19.20 | \$18.30 / \$21.56 | \$21.55 / \$23.48 |
| TT-A-MC-M063-40-X-Z | 2.50 / 63 | \$13.20 / \$16.16 | \$13.92 / \$18.40 | \$18.80 / \$19.76 | \$19.76 / \$22.92 | \$22.72 / \$24.80 |
| TT-A-MC-M076-48-X-Z | 3.00 / 76 | \$13.76 / \$16.72 | \$14.48 / \$19.60 | \$19.68 / \$20.96 | \$21.23 / \$23.64 | \$23.80 / \$25.40 |

For the "X" value: specify either A, B, C, D, or E
 For the "Z" value: specify "S" for Stainless Steel or "I" for Inconel

OTHER CUSTOM SIZES & SHAPES AVAILABLE – PLEASE INQUIRE



Precision Fiberglass Tadpole Gasket Tape
Oven / Boiler / Kiln / Paint Booth / Clean Room Door Seals
1200°F / 648°C TadpoleTape™ Very High Temperature & Heat Resistant



- Precision Tadpole with consistent dimension of bulb and tail.
- Small tail is hollow, and can be supplied filled with a cord or rope to use as a mounting point with slotted metalwork.
- High pushback 304 stainless steel hollow sleeve inside of bulb provides excellent pushback with low compression set.
- Heat treated to result in an extremely clean surface that sheds extremely few fibers and no organic odors. Suitable for paint booth and food service applications.
- Fabricated from high quality type E fiberglass that will not burn and will withstand continuous exposure to temperatures of 1200°F / 648°C.
- This product resists most acids and alkalis and is unaffected by most bleaches and solvents. It is highly flexible and conformable. The base fiber is manufactured to the specifications of ASTM D-578, ASTM committee D13, and subcommittee D13.18.

- Two sizes available:
- 1) 1 3/8 inch OAW (Over All Width) with a 5/8" Bulb with hollow 304 stainless steel mesh core bulb material, with 3/4" tail. The knitted wire mesh core provides excellent compression and pushback and high cycle life. ID of the hollow metal mesh bulb core is 1/2 inch.
 - 2) 1 1/4 inch OAW (Over All Width) with a 1/2" Bulb with hollow 304 stainless steel mesh core bulb material, with 3/4" tail. The knitted wire mesh core provides excellent compression and pushback and high cycle life. ID of the hollow metal mesh bulb core is 7/16 inch.

| Very High Temperature & Heat Resistant Heat Treated Fiberglass Precision Tadpole Gasket Tape with Hollow Stainless Steel Knit Mesh Core | | | |
|--|------------------|-------------------------------|------------------------------|
| Part Number | Bulb Size | Feet / Metres per coil | Price per coil / foot |
| TT-FG-HMC-M013-08-25-X | 1/2" | 25 / 7.6 | \$ 173.25 per coil |
| TT-FG HMC-M013-08-50-X | 1/2" | 50 / 15.2 | \$ 346.50 per coil |
| TT-FG HMC-M013-08-250-X | 1/2" | 250 / 76.2 | \$ 1218.64 per coil |
| TT-FG HMC-M013-08-BTF-X | 1/2" | By The Foot | \$ 10.40 / foot |
| TT-FG-HMC-M016-10-25-X | 5/8" | 25 / 7.6 | \$ 198.66 per coil |
| TT-FG HMC-M016-10-50-X | 5/8" | 50 / 15.2 | \$ 361.73 per coil |
| TT-FG HMC-M016-10-250-X | 5/8" | 250 / 76.2 | \$ 1455.62 per coil |
| TT-FG HMC-M016-10-BTF-X | 5/8" | By The Foot | \$ 12.38 / foot |

Genuine TadpoleTape™ gasket is designed to provide a high temperature thermal seal in industrial, laboratory and commercial ovens and dryers. Used on residential self cleaning ovens as a door gasket seal.

Custom sized tadpole gasket tapes are available



Fiberglass Tadpole Tape with Fiberglass Rope or Wire Mesh Bulb Core 1200°F / 648°C TadpoleTape™ Very High Temperature & Heat Resistant



Made from our heavy duty fiberglass fabrics and ropes, and metallic mesh ropes, this is a soft and resilient gasket material for effective sealing on light metal flanges and where limited bolting force is available – and where doors and other closures rest on the bulb.

Standard Rolls of 50 and 100 feet. For By-The-Foot pricing add 25% to price shown. **This product has a \$25 minimum order value.**

A Heat Treated version of this product is available for clean room door sealing – please enquire

Fabricated from high quality type E fiberglass that will not burn and will withstand continuous exposure to temperatures of 1200°F / 648°C. This product resists most acids and alkalis and is unaffected by most bleaches and solvents. It is highly flexible and conformable.

TadpoleTape™ Very High Temperature & Heat Resistant Fiberglass with Rope Core

| Part Number | Over All Width in / mm | Price per Foot By Bulb Size: A / B / C / D / E in / mm | | | | |
|--------------------|---------------------------|---|------------------|--------------------|------------------|-----------------|
| | | "A" | "B" | "C" | "D" | "E" |
| | | 3/8" / .375 / 7.9 | 1/2" / .500 / 13 | 5/8" / .625 / 15.8 | 3/4" / .750 / 19 | 1" / 1.000 / 25 |
| TT-FG-RC-M025-16-X | 1.00 / 25 | \$ 2.80 | \$ 3.08 | \$ 3.48 | NA | NA |
| TT-FG-RC-M032-20-X | 1.25 / 32 | \$ 2.88 | \$ 3.20 | \$ 3.68 | NA | NA |
| TT-FG-RC-M038-24-X | 1.50 / 38 | \$ 3.08 | \$ 3.32 | \$ 3.80 | \$ 4.20 | NA |
| TT-FG-RC-M044-28-X | 1.75 / 44 | \$ 3.20 | \$ 3.44 | \$ 4.00 | \$ 4.36 | \$ 6.88 |
| TT-FG-RC-M051-32-X | 2.00 / 51 | \$ 3.24 | \$ 3.68 | \$ 4.28 | \$ 4.48 | \$ 6.44 |
| TT-FG-RC-M063-40-X | 2.50 / 63 | \$ 3.64 | \$ 3.96 | \$ 4.68 | \$ 4.80 | \$ 6.80 |
| TT-FG-RC-M076-48-X | 3.00 / 76 | \$ 3.96 | \$ 4.24 | \$ 4.64 | \$ 5.16 | \$ 7.04 |

TadpoleTape™ Very High Temperature & Heat Resistant Fiberglass with Stainless Steel or Inconel 600 Mesh Core

| Part Number | Over All Width in / mm | Price per Foot By Bulb Size: A / B / C / D / E in / mm | | | | |
|----------------------|---------------------------|---|----------------------------------|------------------------------------|----------------------------------|---------------------------------|
| | | "A" | "B" | "C" | "D" | "E" |
| | | 3/8" / .375 / 7.9 SS / Inconel | 1/2" / .500 / 13 SS / Inconel | 5/8" / .625 / 15.8 SS / Inconel | 3/4" / .750 / 19 SS / Inconel | 1" / 1.000 / 25 SS / Inconel |
| TT-FG-MC-M025-16-X-Z | 1.00 / 25 | \$5.84 / \$7.08 | \$6.24 / \$8.20 | \$8.32 / NA | NA | NA |
| TT-FG-MC-M032-20-X-Z | 1.25 / 32 | \$5.92 / \$7.16 | \$6.32 / \$8.32 | \$8.48 / \$9.04 | NA | NA |
| TT-FG-MC-M038-24-X-Z | 1.50 / 38 | \$6.04 / \$7.20 | \$6.44 / \$8.48 | \$8.56 / \$9.16 | \$12.56 / \$18.20 | NA |
| TT-FG-MC-M044-28-X-Z | 1.75 / 44 | \$6.20 / \$7.48 | \$6.56 / \$8.64 | \$8.76 / \$9.32 | \$12.68 / \$18.40 | \$20.64 / \$22.28 |
| TT-FG-MC-M051-32-X-Z | 2.00 / 51 | \$6.28 / \$7.72 | \$6.76 / \$8.88 | \$9.04 / \$9.60 | \$12.80 / \$18.56 | \$20.64 / \$22.48 |
| TT-FG-MC-M063-40-X-Z | 2.50 / 63 | \$6.60 / \$8.08 | \$6.96 / \$9.20 | \$9.40 / \$9.88 | \$13.20 / \$18.92 | \$20.72 / \$22.80 |
| TT-FG-MC-M076-48-X-Z | 3.00 / 76 | \$6.88 / \$8.36 | \$7.24 / \$9.80 | \$12.84 / \$10.48 | \$13.40 / \$19.64 | \$20.80 / \$23.40 |

For the "X" value: specify either A, B, C, D, or E
 For the "Z" value: specify "S" for Stainless Steel or "I" for Inconel

OTHER CUSTOM SIZES & SHAPES AVAILABLE – PLEASE INQUIRE



ProSil™ Silica/Glass Blended Fabric Tadpole Tape with Rope or Wire Mesh Core
1350°F / 732°C TadpoleTape™ High Temperature & Heat Resistant



Made from our proprietary blended silica/fiberglass heavy duty fabric, this is a soft and resilient gasket material for effective sealing on metal flanges and where limited bolting force is available – and where doors and other closures rest on the bulb.

Outperforms standard fiberglass tadpole tapes in higher temperature applications. Remains soft and workable at temperatures where fiberglass tapes become brittle

Standard Rolls of 50 and 100 feet. For By-The-Foot pricing add 25% to price shown. **This product has a \$200 minimum order value.**

1350°F / 732°C continuous rating: Highly flexible and conformable.

TadpoleTape™ Very High Temperature & Heat Resistant
ProSil™ Blended Silica/Glass with Rope Core

| Part Number | Over All Width in / mm | Price per Foot By Bulb Size: A / B / C / D / E (in / mm) | | | | |
|---------------------|------------------------|--|------------------|--------------------|------------------|----------------|
| | | Rope Core / Inconel Mesh Core | | | | |
| | | "A" 3/8" / 7.9 | "B" 1/2" / 13 | "C" 5/8" / 15.8 | "D" 3/4" / 19 | "E" 1" / 25 |
| TT-FGS-RC-M025-16-X | 1.00 / 25 | \$ 5.90 | \$ 6.46 | NA | NA | NA |
| TT-FGS-RC-M032-20-X | 1.25 / 32 | \$ 6.00 | \$ 6.86 | \$ 7.46 | \$ 8.57 | NA |
| TT-FGS-RC-M038-24-X | 1.50 / 38 | \$ 6.70 | \$ 7.30 | \$ 7.90 | \$ 8.96 | NA |
| TT-FGS-RC-M044-28-X | 1.75 / 44 | \$ 7.13 | \$ 7.66 | \$ 8.26 | \$ 9.40 | \$ 11.20 |
| TT-FGS-RC-M051-32-X | 2.00 / 51 | \$ 7.50 | \$ 8.10 | \$ 8.70 | \$ 9.80 | \$ 11.56 |
| TT-FGS-RC-M063-40-X | 2.50 / 63 | \$ 8.33 | \$ 8.90 | \$ 9.50 | \$ 10.63 | \$ 12.36 |
| TT-FGS-RC-M076-48-X | 3.00 / 76 | \$ 9.13 | \$ 9.70 | \$ 10.30 | \$ 11.46 | \$ 13.20 |

For the "X" value: specify either A, B, C, D, or E

TadpoleTape™ Very High Temperature & Heat Resistant
ProSil™ Blended Silica/Glass with Inconel 600 Mesh Core

| Part Number | Over All Width in / mm | Price per Foot By Bulb Size: A / B / C / D / E (in / mm) | | | | |
|---------------------|------------------------|--|------------------|--------------------|------------------|----------------|
| | | Rope Core / Inconel Mesh Core | | | | |
| | | "A" 3/8" / 7.9 | "B" 1/2" / 13 | "C" 5/8" / 15.8 | "D" 3/4" / 19 | "E" 1" / 25 |
| TT-FGS-MC-M025-16-X | 1.00 / 25 | \$ 8.63 | \$ 9.10 | \$ NA | NA | NA |
| TT-FGS-MC-M032-20-X | 1.25 / 32 | \$ 9.43 | \$ 9.86 | \$ 10.80 | \$ 15.23 | NA |
| TT-FGS-MC-M038-24-X | 1.50 / 38 | \$ 9.86 | \$ 10.73 | \$ 11.23 | \$ 15.53 | NA |
| TT-FGS-MC-M044-28-X | 1.75 / 44 | \$ 10.26 | \$ 11.13 | \$ 11.60 | \$ 16.00 | \$ 17.96 |
| TT-FGS-MC-M051-32-X | 2.00 / 51 | \$ 10.66 | \$ 11.53 | \$ 11.80 | \$ 16.33 | \$ 18.20 |
| TT-FGS-MC-M063-40-X | 2.50 / 63 | \$ 11.46 | \$ 12.33 | \$ 12.83 | \$ 17.10 | \$ 18.50 |
| TT-FGS-MC-M076-48-X | 3.00 / 76 | \$ 12.26 | \$ 13.13 | \$ 13.63 | \$ 17.86 | \$ 19.96 |

For the "X" value: specify either A, B, C, D, or E

OTHER CUSTOM SIZES & SHAPES AVAILABLE – PLEASE INQUIRE



**ProSilMax™ Silica/Glass Blended Fabric with Wire Insert
 Tadpole Tape with Rope or Wire Mesh Core
 1350°F / 732°C TadpoleTape™ High Temperature & Heat Resistant**



Made from our proprietary blended silica/fiberglass heavy duty fabric, this is a soft and resilient gasket material for effective sealing on metal flanges and where limited bolting force is available – and where doors and other closures rest on the bulb.

The fabric has a wire insert for additional strength and dimensional stability.

Outperforms standard fiberglass tadpole tapes in higher temperature applications. Remains soft and workable at temperatures where fiberglass tapes become brittle.

Standard Rolls of 50 and 100 feet. For By-The-Foot pricing add 25% to price shown. **This product has a \$200 minimum order value.**

1300°F / 704°C continuous rating: Highly flexible and conformable.

| TadpoleTape™ Very High Temperature & Heat Resistant ProSilMax™ Blended Silica/Glass with Rope Core | | | | | | |
|---|---------------------------|--|------------------|--------------------|------------------|----------------|
| Part Number | Over All Width in / mm | Price per Foot By Bulb Size: A / B / C / D / E (in / mm) | | | | |
| | | Rope Core / Inconel Mesh Core | | | | |
| | | "A" 3/8" / 7.9 | "B" 1/2" / 13 | "C" 5/8" / 15.8 | "D" 3/4" / 19 | "E" 1" / 25 |
| TT-PROSIL-RC-M025-16-X | 1.00 / 25 | \$ 5.90 | \$ 6.46 | NA | NA | NA |
| TT-PROSIL-RC-M032-20-X | 1.25 / 32 | \$ 6.00 | \$ 6.86 | \$ 7.46 | \$ 8.57 | NA |
| TT-PROSIL-RC-M038-24-X | 1.50 / 38 | \$ 6.70 | \$ 7.30 | \$ 7.90 | \$ 8.96 | NA |
| TT-PROSIL-RC-M044-28-X | 1.75 / 44 | \$ 7.13 | \$ 7.66 | \$ 8.26 | \$ 9.40 | \$ 11.20 |
| TT-PROSIL-RC-M051-32-X | 2.00 / 51 | \$ 7.50 | \$ 8.10 | \$ 8.70 | \$ 9.80 | \$ 11.56 |
| TT-PROSIL-RC-M063-40-X | 2.50 / 63 | \$ 8.33 | \$ 8.90 | \$ 9.50 | \$ 10.63 | \$ 12.36 |
| TT-PROSIL-RC-M076-48-X | 3.00 / 76 | \$ 9.13 | \$ 9.70 | \$ 10.30 | \$ 11.46 | \$ 13.20 |

For the "X" value: specify either A, B, C, D, or E

| TadpoleTape™ Very High Temperature & Heat Resistant ProSilMax™ Blended Silica/Glass with Inconel 600 Mesh Core | | | | | | |
|---|---------------------------|--|------------------|--------------------|------------------|----------------|
| Part Number | Over All Width in / mm | Price per Foot By Bulb Size: A / B / C / D / E (in / mm) | | | | |
| | | Rope Core / Inconel Mesh Core | | | | |
| | | "A" 3/8" / 7.9 | "B" 1/2" / 13 | "C" 5/8" / 15.8 | "D" 3/4" / 19 | "E" 1" / 25 |
| TT-PROSIL-MC-M025-16-X | 1.00 / 25 | \$ 8.63 | \$ 9.10 | \$ NA | NA | NA |
| TT-PROSIL-MC-M032-20-X | 1.25 / 32 | \$ 9.43 | \$ 9.86 | \$ 10.80 | \$ 15.23 | NA |
| TT-PROSIL-MC-M038-24-X | 1.50 / 38 | \$ 9.86 | \$ 10.73 | \$ 11.23 | \$ 15.53 | NA |
| TT-PROSIL-MC-M044-28-X | 1.75 / 44 | \$ 10.26 | \$ 11.13 | \$ 11.60 | \$ 16.00 | \$ 17.96 |
| TT-PROSIL-MC-M051-32-X | 2.00 / 51 | \$ 10.66 | \$ 11.53 | \$ 11.80 | \$ 16.33 | \$ 18.20 |
| TT-PROSIL-MC-M063-40-X | 2.50 / 63 | \$ 11.46 | \$ 12.33 | \$ 12.83 | \$ 17.10 | \$ 18.50 |
| TT-PROSIL-MC-M076-48-X | 3.00 / 76 | \$ 12.26 | \$ 13.13 | \$ 13.63 | \$ 17.86 | \$ 19.96 |

For the "X" value: specify either A, B, C, D, or E

OTHER CUSTOM SIZES & SHAPES AVAILABLE – PLEASE INQUIRE



Vermiculite Coated Fiberglass Tadpole Tape / Rope or Wire Mesh Core 1500°F / 815°C TadpoleTape™ FlameShield™ 1500 High Temperature & Heat Resistant



Made from our heavy duty fabrics and ropes/wire mesh, this is a soft and resilient gasket material for effective sealing on light metal flanges and where limited bolting force is available – and where doors and other closures rest on the bulb of the packing.

Standard lengths of 50 and 100 feet. For By-The-Foot pricing: add 25% to price shown. **This product has a \$25 minimum order value.**

1500°F / 815°C continuous rating. Certified to meet the requirements of ASTM E 162, ASTM E 662 & SMP 800-C for surface flammability, smoke and toxic gas generation.

Fabricated from E fiberglass that will not burn and will withstand continuous exposure to temperatures of 1500°F / 815°C. This product resists most acids and alkalis and is unaffected by most bleaches and solvents. It is highly flexible and conformable. Meets Federal Railroad Administration requirements for surface flammability and rate of smoke generation.

| TadpoleTape™ Vermiculite Coated Fiberglass with Rope Core | | | | | | |
|---|---------------------------|---|------------------|--------------------|------------------|-----------------|
| Part Number | Over All Width in / mm | Price per Foot By Bulb Size: A / B / C / D / E fractional inch / decimal inch / mm | | | | |
| | | "A" | "B" | "C" | "D" | "E" |
| | | 3/8" / .375 / 7.9 | 1/2" / .500 / 13 | 5/8" / .625 / 15.8 | 3/4" / .750 / 19 | 1" / 1.000 / 25 |
| TT-FG-VC-RC-M025-16-X | 1.00 / 25 | \$ 4.20 | \$ 4.64 | \$ 5.24 | NA | NA |
| TT-FG-VC-RC-M032-20-X | 1.25 / 32 | \$ 4.36 | \$ 4.80 | \$ 5.52 | NA | NA |
| TT-FG-VC-RC-M038-24-X | 1.50 / 38 | \$ 4.64 | \$ 5.00 | \$ 5.64 | \$ 6.32 | NA |
| TT-FG-VC-RC-M044-28-X | 1.75 / 44 | \$ 4.80 | \$ 5.20 | \$ 5.96 | \$ 6.56 | \$ 10.32 |
| TT-FG-VC-RC-M051-32-X | 2.00 / 51 | \$ 4.88 | \$ 5.52 | \$ 6.44 | \$ 6.76 | \$ 10.56 |
| TT-FG-VC-RC-M063-40-X | 2.50 / 63 | \$ 5.48 | \$ 5.92 | \$ 7.01 | \$ 7.20 | \$ 10.82 |
| TT-FG-VC-RC-M076-48-X | 3.00 / 76 | \$ 5.92 | \$ 6.36 | \$ 7.32 | \$ 7.72 | \$ 11.05 |

| TadpoleTape™ Vermiculite Coated Fiberglass with Stainless Steel or Inconel 600 Mesh Core | | | | | | |
|---|---------------------------|---|----------------------------------|------------------------------------|----------------------------------|--------------------------------|
| Part Number | Over All Width in / mm | Price per Foot By Bulb Size: A / B / C / D / E fractional inch / decimal inch / mm | | | | |
| | | "A" | "B" | "C" | "D" | "E" |
| | | 3/8" / .375 / 7.9 SS / Inconel | 1/2" / .500 / 13 SS / Inconel | 5/8" / .625 / 15.8 SS / Inconel | 3/4" / .750 / 19 SS / Inconel | 1" / 1.00 / 25 SS / Inconel |
| TT-FG-VC-MC-M025-16-X-Z | 1.00 / 25 | \$7.36 / \$8.60 | \$8.40 / \$9.16 | \$9.36 / \$12.20 | NA | NA |
| TT-FG-VC-MC-M032-20-X-Z | 1.25 / 32 | \$7.68 / \$8.72 | \$8.72 / \$9.28 | \$9.72 / \$12.48 | NA | NA |
| TT-FG-VC-MC-M038-24-X-Z | 1.50 / 38 | \$7.80 / \$8.92 | \$9.08 / \$9.44 | \$10.04 / \$12.60 | \$18.08 / \$18.48 | NA |
| TT-FG-VC-MC-M044-28X-Z | 1.75 / 44 | \$8.32 / \$9.08 | \$9.40 / \$9.60 | \$10.60 / \$12.88 | \$18.44 / \$18.64 | \$22.12 / \$22.36 |
| TT-FG-VC-MC-M051-32-X-Z | 2.00 / 51 | \$8.88 / \$9.20 | \$9.84 / \$9.92 | \$11.24 / \$13.32 | \$18.92 / \$19.45 | \$22.60 / \$22.87 |
| TT-FG-VC-MC-M063-40-X-Z | 2.50 / 63 | \$9.52 / \$9.72 | \$10.64 / \$10.24 | \$12.40 / \$13.80 | \$19.56 / \$19.81 | \$23.24 / \$23.97 |
| TT-FG-VC-MC-M076-48-X-Z | 3.00 / 76 | \$10.20 / \$10.12 | \$11.76 / \$10.56 | \$17.72 / \$18.84 | \$20.98 / \$21.76 | \$23.88 / \$24.56 |

For the "X" value: specify either A, B, C, D, or E for the bulb size
 For the "Z" value: specify "S" for Stainless Steel or "I" for Inconel

OTHER CUSTOM SIZES & SHAPES AVAILABLE – PLEASE INQUIRE



Silica Tadpole Tape With Rope or Wire Mesh Core
1800°F / 982°C InSilMax™ TadpoleTape™ Extreme High Temperature Heat Flame Resistant



Made from our heavy duty silica fabrics and ropes, this is a soft and resilient gasket material for effective sealing on light metal flanges and where limited bolting force is available – and where doors and other closures rest on the bulb of the packing.

Standard Rolls of 50 and 100 feet.

For “By-The-Foot” pricing: add 25% to price shown:

Can be used at 1800°F / 982°C continuously.

| InSilMax™ TadpoleTape™ Extreme High Temperature; Heat & Flame Resistant With Rope Core | | | | | | |
|---|------------------------|--|-------------------------|---------------------------|-------------------------|------------------------|
| Part Number | Over All Width in / mm | Price per Foot By Bulb Size: A / B / C / D / E | | | | |
| | | in / mm | | | | |
| | | “A” 3/8” / .375 / 7.9 | “B” 1/2” / .500 / 13 | “C” 5/8” / .625 / 15.8 | “D” 3/4” / .750 / 19 | “E” 1” / 1.000 / 25 |
| TT-S-RC-M025-16-X | 1.00 / 25 | \$ 7.64 | \$ 7.92 | \$ 9.64 | NA | NA |
| TT-S-RC-M032-20-X | 1.25 / 32 | \$ 8.48 | \$ 8.68 | \$ 10.36 | NA | NA |
| TT-S-RC-M038-24-X | 1.50 / 38 | \$ 8.72 | \$ 9.24 | \$ 11.40 | \$ 12.44 | NA |
| TT-S-RC-M044-28-X | 1.75 / 44 | \$ 9.32 | \$ 10.08 | \$ 12.28 | \$ 13.08 | \$ 15.92 |
| TT-S-RC-M051-32-X | 2.00 / 51 | \$ 10.28 | \$ 10.60 | \$ 12.76 | \$ 13.84 | \$ 16.29 |
| TT-S-RC-M063-40-X | 2.50 / 63 | \$ 11.52 | \$ 11.96 | \$ 13.40 | \$ 15.40 | \$ 16.87 |
| TT-S-RC-M076-48-X | 3.00 / 76 | \$ 13.16 | \$ 13.40 | \$ 14.24 | \$ 16.96 | \$ 18.97 |

| InSilMax™ TadpoleTape™ Extreme High Temperature; Heat & Flame Resistant with Stainless Steel or Inconel 600 Mesh Core | | | | | | |
|--|------------------------|--|---|---|---|--|
| Part Number | Over All Width in / mm | Price per Foot By Bulb Size: A / B / C / D / E | | | | |
| | | in / mm and choice of Stainless Steel / Inconel Bulb | | | | |
| | | “A” 3/8” / .375 / 7.9 SS / Inconel | “B” 1/2” / .500 / 13 SS / Inconel | “C” 5/8” / .625 / 15.8 SS / Inconel | “D” 3/4” / .750 / 19 SS / Inconel | “E” 1” / 1.000 / 25 SS / Inconel |
| TT-S-MC-M025-16-X-Z | 1.00 / 25 | \$7.72 / \$8.40 | \$8.60 / \$9.60 | \$9.76 / \$10.64 | NA | NA |
| TT-S-MC-M032-20-X-Z | 1.25 / 32 | \$8.64 / \$9.60 | \$8.92 / \$9.92 | \$10.52 / \$11.44 | NA | NA |
| TT-S-MC-M038-24-X-Z | 1.50 / 38 | \$8.88 / \$9.88 | \$9.28 / \$10.32 | \$11.68 / \$12.76 | \$15.40 / \$19.88 | NA |
| TT-S-MC-M044-28-X-Z | 1.75 / 44 | \$9.52 / \$10.60 | \$10.20 / \$11.04 | \$12.44 / \$13.60 | \$15.88 / \$20.28 | \$18.80 / \$23.24 |
| TT-S-MC-M051-32-X-Z | 2.00 / 51 | \$10.28 / \$11.44 | \$10.80 / \$11.98 | \$14.32 / \$15.80 | \$16.32 / \$20.60 | \$19.24 / \$24.16 |
| TT-S-MC-M063-40-X-Z | 2.50 / 63 | \$11.72 / \$13.04 | \$12.04 / \$13.40 | \$16.08 / \$17.80 | \$17.24 / \$21.36 | \$20.16 / \$25.24 |
| TT-S-MC-M076-48-X-Z | 3.00 / 76 | \$13.36 / \$14.60 | \$13.52 / \$15.04 | \$16.60 / \$18.32 | \$18.16 / \$22.12 | \$21.08 / \$25.96 |

For the “X” value: specify either A, B, C, D, or E for the bulb size

For the “Z” value: specify “S” for Stainless Steel or “I” for Inconel

OTHER CUSTOM SIZES AND SHAPES AVAILABLE – PLEASE INQUIRE



Silica Tadpole Tape With Rope or Wire Mesh Core
1900°F / 1037°C InSilMax™ XT TadpoleTape™ Extreme High Temperature Heat
Flame Resistant



Made from our highest purity heavy duty silica fabrics and ropes, this is a soft and resilient gasket material for effective sealing on metal flanges and where limited bolting force is available – and where doors and other closures rest on the bulb of the tape.

Standard Rolls of 50 and 100 feet.

For By-The-Foot pricing: add 25% to price shown:

Produced from an extremely pure base fiber (SiO₂) and can be used at 1900°F / 1037°C continuously.

| InSilMax™ XT TadpoleTape™ Extreme High Temperature; Heat & Flame Resistant With Rope Core | | | | | | |
|--|---------------------------|---|------------------|--------------------|------------------|----------------|
| Part Number | Over All Width in / mm | Price per Foot By Bulb Size: A / B / C / D / E in / mm | | | | |
| | | "A" | "B" | "C" | "D" | "E" |
| | | 3/8" / .375 / 7.9 | 1/2" / .500 / 13 | 5/8" / .625 / 15.8 | 3/4" / .750 / 19 | 1" / 1.00 / 25 |
| TT-SXT-RC-M025-16-X | 1.00 / 25 | \$ 8.79 | \$ 9.11 | \$ 11.09 | NA | NA |
| TT-SXT-RC-M032-20-X | 1.25 / 32 | \$ 9.75 | \$ 9.98 | \$ 11.91 | NA | NA |
| TT-SXT-RC-M038-24-X | 1.50 / 38 | \$ 10.03 | \$ 10.63 | \$ 13.11 | \$ 14.31 | NA |
| TT-SXT-RC-M044-28-X | 1.75 / 44 | \$ 10.72 | \$ 11.59 | \$ 14.13 | \$ 15.05 | \$ 18.31 |
| TT-SXT-RC-M051-32-X | 2.00 / 51 | \$ 11.82 | \$ 12.19 | \$ 14.67 | \$ 15.92 | \$ 18.74 |
| TT-SXT-RC-M063-40-X | 2.50 / 63 | \$ 13.25 | \$ 13.75 | \$ 15.41 | \$ 17.71 | \$ 19.40 |
| TT-SXT-RC-M076-48-X | 3.00 / 76 | \$ 15.13 | \$ 15.41 | \$ 16.38 | \$ 17.81 | \$ 21.82 |

| InSilMax™ XT TadpoleTape™ Extreme High Temperature; Heat & Flame Resistant with Stainless Steel or Inconel 600 Mesh Core | | | | | | |
|---|---------------------------|--|----------------------------------|------------------------------------|----------------------------------|---------------------------------|
| Part Number | Over All Width in / mm | Price per Foot By Bulb Size: A / B / C / D / E in / mm and choice of Stainless Steel / Inconel Bulb | | | | |
| | | "A" | "B" | "C" | "D" | "E" |
| | | 3/8" / .375 / 7.9 SS / Inconel | 1/2" / .500 / 13 SS / Inconel | 5/8" / .625 / 15.8 SS / Inconel | 3/4" / .750 / 19 SS / Inconel | 1" / 1.000 / 25 SS / Inconel |
| TT-SXT-MC-M025-16-X-Z | 1.00 / 25 | \$8.89 / \$9.66 | \$9.89 / \$11.04 | \$11.22 / \$11.17 | NA | NA |
| TT-SXT-MC-M032-20-X-Z | 1.25 / 32 | \$9.94 / \$11.04 | \$10.26 / \$11.41 | \$12.09 / \$13.16 | NA | NA |
| TT-SXT-MC-M038-24-X-Z | 1.50 / 38 | \$10.21 / \$11.36 | \$10.67 / \$11.87 | \$13.43 / \$14.67 | \$17.71 / \$22.86 | NA |
| TT-SXT-MC-M044-28-X-Z | 1.75 / 44 | \$10.95 / \$12.19 | \$11.73 / \$12.70 | \$14.31 / \$15.64 | \$18.26 / \$23.32 | \$21.62 / \$26.73 |
| TT-SXT-MC-M051-32-X-Z | 2.00 / 51 | \$11.82 / \$13.16 | \$12.42 / \$13.78 | \$16.47 / \$18.17 | \$18.77 / \$23.69 | \$22.13 / \$27.78 |
| TT-SXT-MC-M063-40-X-Z | 2.50 / 63 | \$13.48 / \$14.99 | \$13.85 / \$15.41 | \$18.49 / \$20.47 | \$19.83 / \$22.43 | \$23.18 / \$29.03 |
| TT-SXT-MC-M076-48-X-Z | 3.00 / 76 | \$15.36 / \$16.79 | \$15.55 / \$17.30 | \$19.09 / \$21.07 | \$20.88 / \$25.43 | \$24.24 / \$29.85 |

For the "X" value: specify either A, B, C, D, or E for the bulb size
 For the "Z" value: specify "S" for Stainless Steel or "I" for Inconel

OTHER CUSTOM SIZES & SHAPES AVAILABLE – PLEASE INQUIRE



Ceramic Fiber Tadpole Tape With Rope or Wire Mesh Core
2000°F / 1093°C CerMax™ TadpoleTape™ Extreme High Temperature Heat Flame Resistant



Made from our highest temperature ceramic fiber inonel wire inserted materials, this is a soft and resilient gasket material for effective sealing on metal flanges and where limited bolting force is available – and where doors and other closures rest on the bulb of the tape.

Standard Rolls of 50 and 100 feet.

For By-The-Foot pricing: add 25% to price shown:

Can be used at 2000°F / 1093°C continuously.

| CerMax™ TadpoleTape™ Extreme High Temperature; Heat & Flame Resistant With Rope Core | | | | | | |
|---|------------------------|--|-------------------------|---------------------------|-------------------------|------------------------|
| Part Number | Over All Width in / mm | Price per Foot By Bulb Size: A / B / C / D / E in / mm | | | | |
| | | "A" 3/8" / .375 / 7.9 | "B" 1/2" / .500 / 13 | "C" 5/8" / .625 / 15.8 | "D" 3/4" / .750 / 19 | "E" 1" / 1.000 / 25 |
| TT-C-RC-M038-24-X | 1.50 / 38 | \$ CALL | \$ CALL | \$ CALL | \$ CALL | NA |
| TT-C-RC-M044-28-X | 1.75 / 44 | \$ CALL | \$ CALL | \$ CALL | \$ CALL | \$ CALL |
| TT-C-RC-M051-32-X | 2.00 / 51 | \$ CALL | \$ CALL | \$ CALL | \$ CALL | \$ CALL |
| TT-C-RC-M063-40-X | 2.50 / 63 | \$ CALL | \$ CALL | \$ CALL | \$ CALL | \$ CALL |
| TT-C-RC-M076-48-X | 3.00 / 76 | \$ CALL | \$ CALL | \$ CALL | \$ CALL | \$ CALL |

| CerMax™ TadpoleTape™ Extreme High Temperature; Heat & Flame Resistant with Inonel 600 Mesh Core | | | | | | |
|--|------------------------|---|--|--|--|---------------------------------------|
| Part Number | Over All Width in / mm | Price per Foot By Bulb Size: A / B / C / D / E in / mm and Inonel Mesh Bulb | | | | |
| | | "A" 3/8" / .375 / 7.9 SS / Inonel | "B" 1/2" / .500 / 13 SS / Inonel | "C" 5/8" / .625 / 15.8 SS / Inonel | "D" 3/4" / .750 / 19 SS / Inonel | "E" 1" / 1.000 / 25 SS / Inonel |
| TT-C-MC-M038-24-X | 1.50 / 38 | \$ CALL | \$ CALL | \$ CALL | \$ CALL | NA |
| TT-C-MC-M044-28-X | 1.75 / 44 | \$ CALL | \$ CALL | \$ CALL | \$ CALL | \$ CALL |
| TT-C-MC-M051-32-X | 2.00 / 51 | \$ CALL | \$ CALL | \$ CALL | \$ CALL | \$ CALL |
| TT-C-MC-M063-40-X | 2.50 / 63 | \$ CALL | \$ CALL | \$ CALL | \$ CALL | \$ CALL |
| TT-C-MC-M076-48-X | 3.00 / 76 | \$ CALL | \$ CALL | \$ CALL | \$ CALL | \$ CALL |

For the "X" value: specify either A, B, C, D, or E for the bulb size
 For the "Z" value: specify "S" for Stainless Steel or "I" for Inonel

OTHER CUSTOM SIZES & SHAPES AVAILABLE – PLEASE INQUIRE

CerMax Tadpole Tape Technical Data

CerMax is alumino-silicate based refractory fiber. White and odorless. Available with either a fiberglass or wire re-inforcement. Some organic binder is present, and will smoke-off at elevated temperatures. Once the organics have smoked-off, the product will turn white again. If smoke free operation is required, then it should be heat treated before use.

Chemical & Physical Data: Total Al_2O_3 and SiO_2 > 97% (Al_2O_3 : 47%); Fe_2O_3 <1.1%. Weight Loss (1800°F) 8-10%; Refractory Fiber content >85%. Fiber diameter: 2 - 4 microns; Fiber length: 100 - 250 mm. Fiber shrinkage (1800°F, 3 hr) <3.5%

Thermal Conductivity: 570°F: 0.84 BTU/ft²°F/in (0.12 W/m °K). 1100°F: 0.91 BTU/ft²°F/in (0.13 W/m °K). 1800°F: 1.19 BTU/ft²°F/in (0.17 W/m °K).



Fiberglass with PTFE Coating Tadpole Tape: Rope or Wire Mesh Core 550°F / 287°C TadpoleTape™ High Temperature, Heat & Chemical Resistance



- PTFE Coated Fiberglass

Made from our heavy duty fabrics and ropes/wire mesh; this is a soft and resilient gasket material for effective sealing on light metal flanges and where limited bolting force is available – and where doors and other closures rest on the bulb of the packing. This fabric offers the advantage of a non-asbestos material with higher temperature range and with excellent resistance to almost all solvents, caustics and acids. The base fabric is rated to 1000°F / 537°C. PTFE melting point is 620°F / 327°C.

Standard lengths of 50 and 100 feet. For By-The-Foot pricing: add 25% to price shown:

550°F / 287°C continuous rating

| Tadpole Tape™ High Temperature & Chemical Resistance PTFE Coated Fiberglass with Rope Core | | | | | | |
|---|---------------------------|---|-------------------------|---------------------------|-------------------------|------------------------|
| Part Number | Over All Width in / mm | Price per Foot By Bulb Size: A / B / C / D / E in / mm | | | | |
| | | "A" 3/8" / .375 / 7.9 | "B" 1/2" / .500 / 13 | "C" 5/8" / .625 / 15.8 | "D" 3/4" / .750 / 19 | "E" 1" / 1.000 / 25 |
| TT-FG-PT-RC-M025-16-X | 1.00 / 25 | \$ 5.56 | \$ 5.80 | \$ 6.52 | NA | NA |
| TT-FG-PT-RC-M032-20-X | 1.25 / 32 | \$ 5.96 | \$ 6.24 | \$ 7.32 | NA | NA |
| TT-FG-PT-RC-M038-24-X | 1.50 / 38 | \$ 6.72 | \$ 6.96 | \$ 8.04 | \$ 7.80 | NA |
| TT-FG-PT-RC-M044-28-X | 1.75 / 44 | \$ 7.48 | \$ 7.72 | \$ 8.80 | \$ 8.60 | \$ 11.72 |
| TT-FG-PT-RC-M051-32-X | 2.00 / 51 | \$ 8.08 | \$ 8.52 | \$ 9.76 | \$ 9.28 | \$ 12.12 |
| TT-FG-PT-RC-M063-40-X | 2.50 / 63 | \$ 9.16 | \$ 9.44 | \$ 10.76 | \$ 10.24 | \$ 12.48 |
| TT-FG-PT-RC-M076-48-X | 3.00 / 76 | \$ 10.08 | \$ 10.36 | \$ 11.00 | \$ 11.24 | \$ 13.04 |

| TadpoleTape™ High Temperature & Chemical Resistance PTFE Coated Fiberglass: with Stainless Steel or Inconel 600 Mesh Core | | | | | | |
|--|---------------------------|--|---|---|---|--|
| Part Number | Over All Width in / mm | Price per Foot By Bulb Size: A / B / C / D / E in / mm and choice of Stainless Steel / Inconel Bulb | | | | |
| | | "A" 3/8" / .375 / 7.9 SS / Inconel | "B" 1/2" / .500 / 13 SS / Inconel | "C" 5/8" / .625 / 15.8 SS / Inconel | "D" 3/4" / .750 / 19 SS / Inconel | "E" 1" / 1.000 / 25 SS / Inconel |
| TT-FG-PT-MC-M025-16-X-Z | 1.00 / 25 | \$8.72 / \$11.02 | \$9.12 / \$12.48 | \$11.52 / \$14.00 | NA | NA |
| TT-FG-PT-MC-M032-20-X-Z | 1.25 / 32 | \$9.12 / \$11.68 | \$9.52 / \$13.12 | \$12.28 / \$14.64 | NA | NA |
| TT-FG-PT-MC-M038-24-X-Z | 1.50 / 38 | \$9.84 / \$12.00 | \$10.24 / \$13.80 | \$13.02 / \$15.28 | \$16.36 / \$26.24 | NA |
| TT-FG-PT-MC-M044-28-X-Z | 1.75 / 44 | \$10.64 / \$12.96 | \$11.04 / \$14.44 | \$13.76 / \$16.24 | \$17.12 / \$26.92 | \$25.84 / \$32.00 |
| TT-FG-PT-MC-M051-32-X-Z | 2.00 / 51 | \$11.28 / \$13.64 | \$11.76 / \$15.16 | \$14.72 / \$17.44 | \$17.80 / \$27.64 | \$26.31 / \$32.80 |
| TT-FG-PT-MC-M063-40-X-Z | 2.50 / 63 | \$12.28 / \$15.12 | \$12.64 / \$16.60 | \$15.72 / \$19.08 | \$18.88 / \$29.03 | \$26.55 / \$34.08 |
| TT-FG-PT-MC-M076-48-X-Z | 3.00 / 76 | \$13.20 / \$16.20 | \$13.56 / \$17.48 | \$16.76 / \$25.56 | \$19.72 / \$30.80 | \$27.12 / \$35.80 |

For the "X" value: specify either A, B, C, D, or E
 For the "Z" value: specify "S" for Stainless Steel or "I" for Inconel

OTHER CUSTOM SIZES & SHAPES AVAILABLE – PLEASE INQUIRE

The PTFE is applied to the tadpole tape by dipping the tape through an immersion tank of liquid PTFE dispersion. The tape is then air dried as it leaves the dip tank. The result is a PTFE coating on the tape which is soft, robust and flexible; however, it can be abrasively removed from the tape with aggressive fingernail scraping, resulting in a thinner and thinner layer of ptf remaining with each pass. The PTFE also causes the yarns to be sealed and the small gaps between the yarns filled, resulting in an almost air-tight / liquid-tight tape.



White Rubber Coated Fiberglass Tadpole Tape (Tacky Cloth) with Rope Core

550°F / 287°C: Tuff-Flex™ TadpoleTape™ High Temperature *With or Without Wire Insert*



TadpoleTape™ made from Tuff-Flex™ 550 tacky cloth.

This is a widely used tadpole tape that provides a resilient and non-absorbent gasket material for service against steam, air, water and gases.

Especially useful where a rough or uneven surface or flange exists. The fabric is a fiberglass base with a special white rubber formulation. The fabric is tacky, and has a plastic film surface covering that is removed before installation. The fabric will stick to itself once the film is removed.

Wire Inserted Version: The fill (width wise) yarn for this version of the fabric has a twisted brass wired formed with it, providing additional strength and electrical conductivity/shielding.

550°F / 287°C continuous rating, excellent sealing properties as a gasket material

| Tuff-Flex™ TadpoleTape™ High Temperature White Rubber Coated Fiberglass Tacky Cloth with Rope Core: with or without wire insert | | | | | | |
|---|------------------------|--|-------------------------|---------------------------|-------------------------|------------------------|
| Part Number | Over All Width in / mm | Price per Foot By Bulb Size: A / B / C / D / E in / mm | | | | |
| | | "A" 3/8" / .375 / 7.9 | "B" 1/2" / .500 / 13 | "C" 5/8" / .625 / 15.8 | "D" 3/4" / .750 / 19 | "E" 1" / 1.000 / 25 |
| TT-FG-TC-M025-16-X-Z | 1.00 / 25 | \$ 4.80 | \$ 5.12 | \$ 5.80 | NA | NA |
| TT-FG-TC-M032-20-X-Z | 1.25 / 32 | \$ 5.00 | \$ 5.56 | \$ 6.24 | NA | NA |
| TT-FG-TC-M038-24-X-Z | 1.50 / 38 | \$ 5.48 | \$ 5.84 | \$ 6.52 | \$ 7.48 | NA |
| TT-FG-TC-M044-28-X-Z | 1.75 / 44 | \$ 6.04 | \$ 6.36 | \$ 7.04 | \$ 8.12 | \$ 9.96 |
| TT-FG-TC-M051-32-X-Z | 2.00 / 51 | \$ 6.60 | \$ 6.84 | \$ 7.32 | \$ 8.84 | \$ 11.24 |
| TT-FG-TC-M063-40-X-Z | 2.50 / 63 | \$ 7.56 | \$ 7.84 | \$ 8.36 | \$ 9.64 | \$ 12.84 |
| TT-FG-TC-M076-48-X-Z | 3.00 / 76 | \$ 8.56 | \$ 8.92 | \$ 9.40 | \$ 10.76 | \$ 14.44 |

For the "X" value in the part number specify either A, B, C, D, or E to correspond to the bulb size

For the "Z" value in the part number use "W" to specify with wire insert use "N" to specify no wire

Same price with and without wire insert

Standard Rolls of 25 and 50 feet. For By-The-Foot pricing: add 25% to price shown.

OTHER CUSTOM SIZES & SHAPES AVAILABLE – PLEASE INQUIRE

Curing: It is recommended that this material be cured in situ. This material must be heated to a minimum of 300°F within 60 minutes, then it must sit at 300°F or higher for 90 minutes for the rubber to fully cure.

Do not overtorque the material during this curing time or the rubber will be squeezed off of the base material.

If the material is not fully cured, the rubber will drip from the material causing voids. After curing the material can be exposed to a lower operational temperature.



Expanded PTFE Tadpole Tape with Rope or Wire Mesh Core
550°F / 287°C TadpoleTape™ High Temperature & Chemical Resistance



- Made from expanded PTFE (ePTFE)

Pure ePTFE tape formed into a tadpole with either a rope core or stainless steel mesh core. Excellent corrosion resistance, high pressure resistance, easy to use.

Excellent resistance to almost all solvents, caustics and acids.

PTFE melting point is 620°F / 327°C.

Standard Roll of 100 feet. Sold in Full Rolls Only

| TadpoleTape™ ePTFE with Rope Core | | | | | | |
|--|---------------------------|--|-------------------------|-------------------------|-------------------------|-----------------------|
| Part Number | Over All Width in / mm | Price per Roll By Bulb Size: A / B / C / D / E | | | | |
| | | fractional inch / decimal inch / mm | | | | |
| | | "A" 3/8" / .375 / 7.9 | "B" 1/2" / .500 / 13 | "C" 5/8" / .625 / 16 | "D" 3/4" / .750 / 19 | "E" 1" / 1.00 / 25 |
| TT-EPT-RC-M025-16-X | 1.00 / 25 | \$ 915.33 | \$ 1147.50 | NA | NA | NA |
| TT-EPT-RC-M032-20-X | 1.25 / 32 | \$ 1092.67 | \$ 1340.00 | \$ 1240.33 | NA | NA |
| TT-EPT-RC-M038-24-X | 1.50 / 38 | \$ 1250.67 | \$ 1497.00 | \$ 1422.67 | \$ 1512.00 | NA |
| TT-EPT-RC-M044-28-X | 1.75 / 44 | \$ 1352.50 | \$ 1672.33 | \$ 2040.00 | \$ 2153.33 | NA |
| TT-EPT-RC-M051-32-X | 2.00 / 51 | \$ 1936.67 | \$ 2346.67 | \$ 2273.33 | \$ 2386.67 | \$ 2690.00 |
| TT-EPT-RC-M063-40-X | 2.50 / 63 | \$ 2430.00 | \$ 2790.00 | \$ 2740.00 | \$ 2853.00 | \$ 3156.67 |
| TT-EPT-RC-M076-48-X | 3.00 / 76 | \$ 2990.00 | \$ 3233.00 | \$ 3206.67 | \$ 3320.00 | \$ 3623.33 |

| TadpoleTape™ ePTFE with Stainless Steel Mesh Core | | | | | | |
|--|---------------------------|--|-------------------------|-------------------------|-------------------------|-----------------------|
| Part Number | Over All Width in / mm | Price per Roll By Bulb Size: A / B / C / D / E | | | | |
| | | fractional inch / decimal inch / mm | | | | |
| | | "A" 3/8" / .375 / 7.9 | "B" 1/2" / .500 / 13 | "C" 5/8" / .625 / 16 | "D" 3/4" / .750 / 19 | "E" 1" / 1.00 / 25 |
| TT-EPT-MC-M025-16-X | 1.00 / 25 | \$ 1376.67 | \$ 1456.67 | NA | NA | NA |
| TT-EPT-MC-M032-20-X | 1.25 / 32 | \$ 1598.00 | \$ 1695.00 | \$ 1823.33 | NA | NA |
| TT-EPT-MC-M038-24-X | 1.50 / 38 | \$ 1798.00 | \$ 1896.00 | \$ 2056.67 | \$ 2453.33 | NA |
| TT-EPT-MC-M044-28-X | 1.75 / 44 | \$ 1930.00 | \$ 2123.33 | \$ 2290.00 | \$ 2686.67 | NA |
| TT-EPT-MC-M051-32-X | 2.00 / 51 | \$ 2150.00 | \$ 2346.67 | \$ 2523.33 | \$ 2920.00 | \$ 3306.67 |
| TT-EPT-MC-M063-40-X | 2.50 / 63 | \$ 2643.33 | \$ 2790.00 | \$ 2990.00 | \$ 3386.67 | \$ 3773.33 |
| TT-EPT-MC-M076-48-X | 3.00 / 76 | \$ 3203.33 | \$ 3233.33 | \$ 3456.67 | \$ 3853.33 | \$ 4240.00 |

For the "X" value: specify either A, B, C, D, or E for the bulb size

OTHER SIZES AVAILABLE – PLEASE INQUIRE

TTWearGuard

Custom Size and Custom Construction TadpoleTape™

Our fabrication shop can produce almost any size and shape gasket, tadpole shape or almost any other shape.

Some of the common shapes include double bulb, square bulb, and metal mesh covered.

To assist our fabrication shop, any sketch, drawing, or photo of an existing item would be useful.

Please contact us to obtain a price and time quotation.