

500°F / 260°C: High Temperature, Heat & Flame Resistant Silicone Rubber Coated Fiberglass Sleeve with Hook/Loop Closure: *Small Diameter*



FlameShield™ EasyInstall™ High Temperature sleeve with hook and loop or Velcro® closure is a heavy duty sleeve perfect for protecting industrial hose and cable, but with the benefits of being installed & removed as required without disconnecting the hose, cable or wire. The sleeve is fabricated from a braided base fabric (similar to our S-FSHD sleeve construction) which provides radial elasticity, accommodating connectors and splices.

Typical applications include Electric Arc Furnace cable covers, robotic welding cable protection, steel mill roll-stand hydraulic hose protection, steel mill cooling water hose protection, vehicle under-hood wire, cable and hose protection or as a cover in extreme environments where serviceability is required.

The closure remains inside of the sleeve and is protected by the fabric overlap. Thread used is a high temperature e-fiberglass. Standard or flame retardant hook & loop can be supplied.

Also an excellent cold temperature sleeve with flexibility to -76°C for refrigeration and cryogenic applications.

**500°F / 260°C continuous rating with weld splatter / molten metal splash protection.
 2200°F / 1205°C for periods up to 15 minutes and short excursions to 3000°F / 1650°C.**

FlameShield™ High Temperature Silicone Rubber Coated Fiberglass Sleeve with Velcro Closure – Small Diameter						
Nominal ID inches / mm / Dash #			Part Number	Hook & loop Width, inches	Price per Foot	Price per Metre
1/2	13	-08	S-FS-VCL-M013-08-X-Y	1/2	\$ 14.56	\$ 47.76
3/4	19	-12	S-FS-VCL-M019-12-X-Y	1/2	\$ 17.34	\$ 56.88
1	25	-16	S-FS-VCL-M025-16-X-Y	5/8	\$ 20.29	\$ 66.55
1 1/4	32	-20	S-FS-VCL-M032-20-X-Y	5/8	\$ 22.60	\$ 74.13
1 1/2	38	-24	S-FS-VCL-M038-24-X-Y	3/4	\$ 24.83	\$ 81.44
1 3/4	44	-28	S-FS-VCL-M044-28-X-Y	3/4	\$ 26.77	\$ 87.81
2	51	-32	S-FS-VCL-M051-32-X-Y	3/4	\$ 29.21	\$ 95.81
2 1/4	57	-36	S-FS-VCL-M057-36-X-Y	3/4	\$ 31.23	\$ 102.43
2 1/2	64	-40	S-FS-VCL-M064-40-X-Y	3/4	\$ 33.49	\$ 109.85
2 3/4	70	-44	S-FS-VCL-M070-44-X-Y	3/4	\$ 35.80	\$ 117.42
3	76	-48	S-FS-VCL-M076-48-X-Y	1	\$ 37.94	\$ 124.44
3 1/4	83	-52	S-FS-VCL-M083-52-X-Y	1	\$ 40.34	\$ 132.32
3 1/2	89	-56	S-FS-VCL-M089-56-X-Y	1	\$ 42.29	\$ 138.71

Available in continuous lengths up to 100 feet for up to 3.5" I.D. 150 feet for larger I.D.s.

For the "X" value: substitute "WS" for serged edges and "NS" for not serged edges. (add \$2.75 per foot for WS option)
 For the "Y" value substitute "S" for standard hook/loop and "F" for flame retardant. (add \$3.00 per foot for F option)

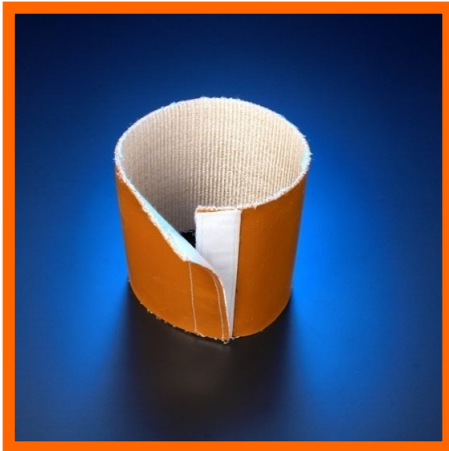
Customer may specify a hook/loop width other than standard if desired (except for 1/2 and 3/4" sleeve).

This is a custom fabrication item – please allow 3 to 10 business days from date of order. Contact us to determine the specific production time for your order.

This product is fabricated from braided substrate fabric (for sizes up to and including 3.5" I.D.) and woven substrate fabric for larger sizes (greater than 3.5" I.D.). For both base materials the long edge of the sleeve has some fray of the underlying fiberglass, which does not affect the performance of the sleeve, and is only an aesthetic consideration.

This Product is Available By-The-Foot / Metre

500°F / 260°C: High Temperature, Heat & Flame Resistant Silicone Rubber Coated Fiberglass Sleeve with Velcro Closure: *Large Diameter*



FlameShield™ EasyInstall™ High Temperature sleeve with Velcro closure is a heavy duty sleeve perfect for protecting industrial hose and cable, but with the benefits of being installed & removed as required without disconnecting the hose, cable or wire. Typical applications are as an Electric Arc Furnace cable cover, robotic welding cable protection, steel mill roll-stand hydraulic hose protection, steel mill cooling water hose protection or as a cover in extreme environments where serviceability is required.

The Velcro closure remains inside of the sleeve and is protected by the fabric overlap. The thread used is a high temperature e-fiberglass. Also an excellent cold temperature sleeve with flexibility to -76°C for refrigeration and cryogenic applications.

**500°F / 260°C continuous rating with weld splatter / molten metal splash protection.
2200°F / 1205°C for periods up to 15 minutes and short excursions to 3000°F / 1650°C.**

FlameShield™ High Temperature Sleeve with Velcro Closure: Large Diameter						
Nominal ID inches / mm / Dash #			Part Number	Hook/Loop Width, inches	Price per Foot	Price per Metre
3 3/4	95	-60	S-FS-VCL-M095-60-X-Y	1	\$ 44.51	\$ 145.99
4	102	-64	S-FS-VCL-M102-64-X-Y	1	\$ 48.37	\$ 158.65
4 1/4	108	-68	S-FS-VCL-M108-68-X-Y	1	\$ 50.54	\$ 165.77
4 1/2	114	-72	S-FS-VCL-M114-72-X-Y	1	\$ 52.94	\$ 173.64
4 3/4	121	-76	S-FS-VCL-M121-76-X-Y	1	\$ 55.17	\$ 180.96
5	127	-80	S-FS-VCL-M127-80-X-Y	1	\$ 57.54	\$ 188.73
5 1/4	133	-84	S-FS-VCL-M133-84-X-Y	1.5	\$ 59.37	\$ 194.73
5 1/2	140	-88	S-FS-VCL-M140-88-X-Y	1.5	\$ 61.66	\$ 202.25
5 3/4	146	-92	S-FS-VCL-M146-92-X-Y	1.5	\$ 63.94	\$ 209.72
6	152	-96	S-FS-VCL-M152-96-X-Y	1.5	\$ 66.11	\$ 216.84
6 1/4	159	-100	S-FS-VCL-M159-100-X-Y	1.5	\$ 68.51	\$ 224.71
6 1/2	165	-104	S-FS-VCL-M165-104-X-Y	1.5	\$ 70.74	\$ 232.03
6 3/4	171	-108	S-FS-VCL-M171-108-X-Y	1.5	\$ 72.74	\$ 238.59
7	178	-112	S-FS-VCL-M178-112-X-Y	1.5	\$ 74.97	\$ 245.90
7 1/4	184	-116	S-FS-VCL-M184-116-X-Y	1.5	\$ 76.97	\$ 252.46
7 1/2	191	-120	S-FS-VCL-M191-120-X-Y	1.5	\$ 79.54	\$ 260.89
7 3/4	197	-124	S-FS-VCL-M197-124-X-Y	1.5	\$ 81.77	\$ 268.21
8	203	-128	S-FS-VCL-M203-128-X-Y	2	\$ 83.69	\$ 274.50
8 1/4	210	-132	S-FS-VCL-M210-132-X-Y	2	\$ 86.26	\$ 282.93
8 1/2	216	-136	S-FS-VCL-M216-136-X-Y	2	\$ 88.43	\$ 290.05
8 3/4	222	-140	S-FS-VCL-M222-140-X-Y	2	\$ 90.23	\$ 295.95
9	229	-144	S-FS-VCL-M229-144-X-Y	2	\$ 92.57	\$ 303.63
9 1/4	235	-148	S-FS-VCL-M235-148-X-Y	2	\$ 94.49	\$ 309.93
9 1/2	241	-152	S-FS-VCL-M241-152-X-Y	2	\$ 97.20	\$ 318.82
9 3/4	248	-156	S-FS-VCL-M248-156-X-Y	2	\$ 99.37	\$ 325.93
10	254	-160	S-FS-VCL-M254-160-X-Y	2	\$101.66	\$ 333.45
10 1/4	260	-164	S-FS-VCL-M260-164-X-Y	2	\$104.00	\$ 341.12
10 1/2	267	-168	S-FS-VCL-M267-168-X-Y	2	\$ 105.60	\$ 346.37
10 3/4	273	-172	S-FS-VCL-M273-172-X-Y	2	\$ 113.31	\$ 371.66
11	279	-176	S-FS-VCL-M279-176-X-Y	2	\$ 115.66	\$ 379.36
11 1/4	286	-180	S-FS-VCL-M286-180-X-Y	2	\$ 118.51	\$ 388.71
11 1/2	292	-184	S-FS-VCL-M292-184-X-Y	2	\$ 122.37	\$ 401.37
11 3/4	298	-188	S-FS-VCL-M298-188-X-Y	2	\$ 126.22	\$ 414.01
12	305	-192	S-FS-VCL-M305-192-X-Y	1.5	\$ 129.41	\$ 424.46

Available in continuous lengths up to 150 feet.

For the "X" value: substitute "WS" for serged edges and "NS" for not serged edges. (add \$2.75 per foot for WS option)

For the "Y" value substitute "S" for standard hook/loop and "F" for flame retardant. (add \$3.00 per foot for F option)

This is a custom fabrication item – please allow 3 to 10 business days from date of order. Contact us to determine the specific production time for your order. This product is fabricated from woven substrate fabric for sizes greater than 3.5" I.D. The edge of the fabric has some fray of the underlying fiberglass, which does not affect the performance of the sleeve, and is only an aesthetic consideration.

This Product is Available By The Foot / Metre